



AP Sack Kraft

Designed to protect in the toughest environments



When your supply chain puts your packaging under pressure, your products won't be. Opal Australian Paper understands that producing the highest quality bags brings with it the expectation of exceptional outcomes.

Opal.



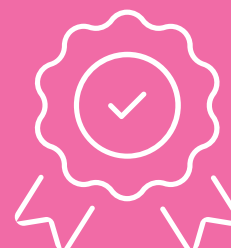
Quality
Kraft Fibre



High
Performance



Ideal for Demanding
Applications



Delivering Product
Safely Worldwide

AP Sack Kraft



- ▶ High strength plantation pine including select high tear chips delivers consistent quality
- ▶ State of the art refining produces highly extensible fibres for superior Cross-Direction (CD) Tensile Energy Absorption (TEA) strength properties
- ▶ On-machine semi-extensible process develops TEA for superior Machine Direction (MD) strength properties
- ▶ Paper structure in High Porous grades delivers consistent rapid filling and lowers failure risk
- ▶ Food contact compliance testing lowers risk in food contact and food packaging applications

HIGH POROUS SACK KRAFT

70—90 GSM

- Extensible with very high MD TEA
- Low Gurley porosity for high speed filling lines
- High CD TEA from state of the art refining

SEMI EXTENSIBLE HIGH POROUS SACK KRAFT 70—90 GSM

- Semi extensible with high MD TEA
- Low Gurley porosity for high speed filling lines
- High CD TEA from state of the art refining

SEMI EXTENSIBLE SACK KRAFT (70—100 GSM)

- Semi extensible with high MD TEA
- High CD TEA from state of the art refining
- Suitable for heavy duty multi-ply applications like cement

AUSTRALIAN PREMIUM SACK KRAFT (70—110 GSM)

- High MD stiffness ideal for open mouth sacks
- High CD TEA from state of the art refining
- Creating high quality Sack Krafts for world class products used in rugged environments



Our Markets

Opal Australian Paper's integrated pulp and paper mill is one of Australia's largest pulp and paper manufacturing facilities. It operates five paper machines, three pulp mills and two recycling mills.

With primary markets in Australia and New Zealand, Opal Australian Paper also exports to many countries throughout Asia, Europe, the USA, Latin America, the Middle East and Africa.



Certifications

Opal Australian Paper is certified to the following management system standards, ISO 9001, ISO 14001 and AS/NZ 4801, and to the Program for the Endorsement of Forest Certifications (PEFC™) and Forest Stewardship Council® (FSC® C002059).

Certified Wood Sourcing

Opal Australian Paper purchases 100% of our wood from local Victorian suppliers.

We are committed to ensuring that our wood is from responsibly managed sources and that the areas from which we source are replanted and regrown after harvest.

Key to this commitment is our requirement for major wood suppliers to be independently third party certified. Certification is a way of demonstrating that a forest is being managed sustainably and biodiversity is maintained. Certified forestry managers are regularly audited to ensure appropriate forestry practices are in place.

Opal Australian Paper is Chain of Custody Certified to the Program for the Endorsement of Forest Certifications (PEFC™) and Forest Stewardship Council® (FSC® C002059), which are the two major global forest certification systems. Our Sack Kraft Paper products are PEFC certified.

Food Contact Assurance

Opal Australian Paper adheres to a rigorous system of control and approval of raw materials used in the production of packaging products.

Sack Kraft Paper products have been tested by an independent and accredited laboratory to confirm food compliance conformance to globally recognised standards, such as the US FDA's Packaging & Food Contact Substances Notification program and the European BfR Recommendation XXXVI on Paper and Board for Food Contact.

Please refer to Sack Kraft Paper technical specifications for specific information, including guidance for food contact applications.

For more information email us: APpack@australianpaper.com.au