

# New Paper Mill - Matraville

## STORMWATER MANAGEMENT SCHEME

- Final
- November 2012



# New Paper Mill – Matraville

## STORMWATER MANAGEMENT SCHEME

- Final
- November 2012

---

Sinclair Knight Merz  
ABN 37 001 024 095  
100 Christie Street  
St Leonards NSW 2065 Australia  
Postal Address  
PO Box 164 St Leonards NSW 2065 Australia  
Tel: +61 2 9928 2100  
Fax: +61 2 9928 2500  
Web: [www.globalskm.com](http://www.globalskm.com)

**COPYRIGHT:** The concepts and information contained in this document are the property of Sinclair Knight Merz Pty Ltd. Use or copying of this document in whole or in part without the written permission of Sinclair Knight Merz constitutes an infringement of copyright.

**LIMITATION:** This report has been prepared on behalf of and for the exclusive use of Sinclair Knight Merz Pty Ltd's Client, and is subject to and issued in connection with the provisions of the agreement between Sinclair Knight Merz and its Client. Sinclair Knight Merz accepts no liability or responsibility whatsoever for or in respect of any use of or reliance upon this report by any third party.



## Contents

<b>1. Introduction</b>	<b>1</b>
<b>1.1. Design</b>	<b>1</b>
<b>1.2. Consultation</b>	<b>2</b>
<b>Appendix A – Stormwater Management Plan</b>	<b>4</b>
<b>Appendix B Correspondence with Sydney Water</b>	<b>5</b>
<b>Appendix C Correspondence with SPC</b>	<b>6</b>
<b>Appendix D Correspondence with RCC</b>	<b>7</b>





## 1. Introduction

As part of Schedule 3- Minister's Condition of Approval (MCoA) : 9 for the New Paper Mill at Matraville (Application No. 05\_0120, AMCOR are required to prepare a:

*Stormwater Management Scheme for the site that has been prepared in accordance with the requirements of Sydney Water and Council – and generally in accordance with the Managing Urban Stormwater: Council Handbook (DECC).*

The information contained in this report addresses the requirements of this MCoA.

### 1.1. Design

In the existing Paper Mill 4.7ha of the site drained into the process water system with water eventually discharged to sewer or Botany Bay when the sewer was unavailable to receive the Paper Mill's discharges in large wet weather events. The remainder of the site drained to either Council stormwater systems or to the Long Dam stormwater system which is owned by Sydney Water.

Design of the site stormwater scheme for the New Paper Mill was undertaken by GHD in compliance with relevant standards and Randwick City Council Private Stormwater Code, Oct 1992. The principles contained in *Managing Urban Stormwater: Council Handbook (DECC)* were also considered in designing the system. A copy of the stormwater management scheme for the site is attached as **Appendix A**. A summary of the existing and new catchment areas and stormwater discharge locations is provided in **Table 1-1**.

For the New Paper Mill, no stormwater will be discharged to sewer and the areas of the site stormwater draining to Council and Sydney Water stormwater systems will decrease. However the majority of stormwater from the site will be discharged via the disused cooling water outfall into Bunnerong Canal near the corner of Bumborah Point Road and Botany Road. This part of Bunnerong Canal is owned by Sydney Ports Corporation (SPC).

**Table 1-1: Comparison of stormwater catchments for existing and New Paper Mill**

<b>Catchment</b>	<b>Previous Catchment Area (ha)</b>	<b>Proposed Catchment Area (ha)</b>	<b>Existing Pipe Size of Discharge Point</b>
Long Dam	3.1	2.8	915 dia pipe
Council System (SW corner of site)	3.3	1.9	600 dia pipe
Process System	4.7	-	-
Bunnerong Creek via Council System (SE corner of site)	0.7	0.4	915 dia pipe
Existing Saltwater Outfall	-	6.7	1.2m x 2.4m box culvert (discharges into 1500 dia pipe downstream)

Apart from the changes in stormwater catchments, the major change to stormwater management is the treatment of the vast majority of stormwater from the New Paper Mill. Apart from stormwater from a small area at the Botany Road access, all stormwater will be treated to remove suspended particulates (at least 80% removal efficiency) and gross pollutants before discharge from site. This complies with the commonly recognised standard for new developments and is a significant improvement on the existing situation.

## **1.2. Consultation**

In the development and design of the stormwater system for the New Paper Mill, Randwick City Council (RCC), Sydney Ports Corporation (SPC) and Sydney Water Corporation have been consulted.

Sydney Water had no issues with the design of stormwater management scheme for the New Paper Mill and a copy of their agreement is attached in **Appendix B**.

Consultation was undertaken with SPC and the additional information requested by them on sediment accumulation and peak water levels in Bunnerong Canal was provided in October 2011. SPC granted conditional approval for the discharge of stormwater in February 2012 (See **Appendix C**). SPC also indicated that a licence would be required for the long-term discharge of stormwater. In August 2012, SPC provided a preliminary draft of the licence to AMCOR which contained the legal agreement for the discharge but was missing any specific environmental conditions, licensing fee and other key elements. AMCOR reviewed the preliminary licence and provided comments to SPC in the same month. Despite numerous requests from AMCOR to resolve the matter, SPC has yet to provide AMCOR with a final draft licence. SPC have indicated that NSW Treasury is handling the licensing process and it is possible that the proposed lease of Port Botany may be delaying the issue of the licence. The SPC contact, Carolyn Moss, has indicated that she would be



happy to talk to Department of Planning and Infrastructure on the licensing issue. Her contact details are:

Carolyn Moss

Senior Property Manager - Commercial

E: [cmoss@sydneyports.com.au](mailto:cmoss@sydneyports.com.au)

T: +61 2 9296 4798 | F: +61 2 9296 4768 | M: 0427 664 576

RCC have been consulted numerous times on the design of the stormwater management scheme for the New Paper Mill and any issues raised by RCC have been addressed. The stormwater management plan contained in **Appendix A** was provide to RCC in August 2010. However, RCC are not prepared to provide any written approval or endorsement of the stormwater management scheme until AMCOR obtains a licence from SPC (See **Appendix D** for the last correspondence).

Separate to the on-site stormwater management system, AMCOR and RCC are trying to find agreement on suitable management measures for managing overland flows from local catchments upstream of the New Paper Mill. RCC has provided comments on AMCOR's proposed option for managing overland flows. AMCOR is currently addressing these comments and is aiming to provide a response to RCC in November 2012. In the interim AMCOR proposes to allow overland flows on to its site.



## **Appendix A – Stormwater Management Plan**





19 August 2010

Mr John Flanigan,  
Randwick City Council,  
30 Frances Street,  
Randwick NSW 2031,

Our ref: 21/19632/162622  
Your ref:

Dear John

## **Amcor B9 Project Stormwater Drainage Design**

### **1 Introduction**

Amcor propose to construct and operate a new paper mill (referred to as Project B9) at their existing site at Botany Road, Sydney. The new paper mill replaces an existing mill at the site with significant increase in the efficiency of the paper making process.

This memo addresses the proposed stormwater design for the redevelopment and the associated impacts to the receiving stormwater systems.

Project Approval (Application No. 05\_0120) was granted on 20 July 2007 by the Department of Planning, NSW with specific conditions of consent. Amcor subsequently lodged a request for modifications to the Approved Project which was approved on 12<sup>th</sup> July 2010 with amendments to the conditions of consent. The proposed stormwater design adheres to these conditions, specifically Schedule 3, Items 5, 9 and 28A-C.

The Amcor site lies within the Randwick City Council Local Government Area (LGA). Council's stormwater requirements are detailed in the Randwick City Council "Private Stormwater Code, October 1992" (current code).

### **2 Site Description**

The existing site area is approximately 15.6ha. Amcor propose to subdivide the existing site thereby reducing the proposed Project B9 site area to approximately 10.5ha.

The existing Amcor site sits across two stormwater catchments, the Eastern Creek catchment on the eastern side and the Sydney Water stormwater Channel (Bunnerong Main Drain) catchment on the western side. The western catchment includes runoff from the local McCauley Street area, the Amcor site and immediately north of the site. The Amcor site is on the downstream end of the two stormwater catchments and is very close to Botany Bay.

### **3 Existing Stormwater Management Scheme**

The existing developed site is predominantly impervious with the exception of a landscaped batter along the Botany Road boundary.



The existing stormwater management scheme includes discharge points to Long Dam, Bunnerong Creek/Canal, the Randwick Council stormwater system and Amcor's process system.

### **3.1 Long Dam**

The north-west area of the site drains to Long Dam. Long Dam is situated within the Sydney Water Channel (Bunnerong Main Drain) about 180m west of the Amcor site and is fed by stormwater flow from this drain. The catchment for the drain is about 400ha and the total storage volume of the dam is no more than 1200m<sup>3</sup> (assuming a size of 80m long x 15m wide and an average depth of 3m). During times of low rainfall the water level in the dam is maintained by pumping bore water into the drain from several Amcor-controlled bores situated upstream of the dam. Water is then pumped from the dam to the Amcor site for use as process water. In order to ensure that water is available, the water level in the dam is maintained at or near full capacity at all times.

### **3.2 Sydney Water Channel (Bunnerong Main Drain)**

The south-west area of the site previously (before demolition works) discharged to the Council system on Botany Road located at the southwest corner of the site, draining beneath Botany Road to Bunnerong Main Drain via a 750 mm concrete pipe which finally discharges downstream of Long Dam. This network has been decommissioned with the demolition of the old buildings and will be rebuilt with the new building.

### **3.3 Process Drainage System**

The central part of the site, including the stock preparation building, waste paper yard and container loading area (total 8.6ha) drains to the existing process water system which in turn discharges to the Sydney Water sewer. The total runoff discharging to the process water system will be significantly reduced with improved operations.

### **3.4 Bunnerong Creek**

The remainder of the eastern side of the site drains to Bunnerong Creek via a number of discharge points. Bunnerong Creek in turn discharges to Bunnerong Canal.

### **3.5 Saltwater Outfall**

In addition to the existing stormwater discharge points above there is an existing "Saltwater Outfall" located adjacent to the southern boundary of the site. This comprises a 1.2m x 2.4m culvert section that drains beneath Botany Road into the Bunnerong Canal. This outfall historically returned seawater used as cooling water for the Mill Powerhouse turbine condensers to the Bunnerong Canal. More recently, under the terms of the Mill's Environment Protection Licence, it was used to discharge process water diluted with seawater to Bunnerong canal when the Sydney Water sewer was unavailable under the terms of the Mill's Environment Protection licence. This facility is no longer required following the signing of an Agreement with Sydney Water in October 2009 that guarantees Amcor continuous access to their sewer system.



## 4 Proposed Stormwater Management Scheme

The proposed site stormwater drainage design, shown on drawing 21-19632-C030 attached, has been prepared in accordance Schedule 3 Item 9 of the DA Conditions of Consent. Although the Amcor site will be subdivided in the future, GHD have considered the site in its entirety in determining the catchment plan and stormwater management scheme. The total impervious area for the proposed development is unchanged, therefore there is no increase in pre-development flows.

### 4.1 Flood Study

A detailed flood study was undertaken by Sinclair Knight Merz (SKM) in accordance with Schedule 3 Item 5 of the DA Conditions of Consent. The stormwater management system has been designed in accordance with these flood studies namely the “Western Side Flood Study” (dated 9<sup>th</sup> December 2008) and the “Eastern Creek Flood Study” (dated 26<sup>th</sup> May 2009). The studies were submitted to Randwick Council on 12<sup>th</sup> December 2008 and following consultation with Council the “Eastern Creek Flood Study” was revised and resubmitted on 29<sup>th</sup> May 2009.

The flood study concludes:

- *Construction of the new paper mill will not increase the net volume of flood water arriving at points external to the site*
- *There may be small changes to where water runs off the site onto Botany Road, however the overall volume of floodwater running onto Botany Road will remain the same.*

### 4.2 Overland Flows

The site profile has been designed to prevent any overland flooding (1 in 100 year ARI) on McCauley St from entering the site.

Any overland flows from the area north of the Finished Product Store (to be sub-divided in the future) will be captured via a cut-off drain along the northern boundary which will be discharged to the McCauley St stormwater line. These overland flows were modelled in the “Western Side Flood Study” by SKM. Hydrological modelling results identify overland flows are currently routed down McCauley St therefore this cut-off drain will simply formalise the flow path.

Overland flow paths through the eastern side of the site will remain.

### 4.3 Finished Floor Levels (FFL)

Section 5.2.3 of Randwick City Council Private Stormwater Code, Oct 1992 Section states:

*5.2.3 Overland Escape Route – ‘The floor level of all habitable areas and storage areas adjacent to the detention area shall be a minimum of 0.3 metre above the maximum water level for the 1 in 100 year storm. Alternatively a permanent water proof barrier 0.3 metre high is to be constructed around such areas.’*

The site layout and grading has been designed to achieve minimum 300mm freeboard above the 100 year ARI storm event in accordance with the above standards and Schedule 3 Item 5 of the Conditions of Consent. The paper machine building FFL is 6.5m AHD and the product store FFL is 7.5m AHD.



#### 4.4 Detention Requirements

Randwick City Council requires most new developments in the Randwick LGA to provide on-site stormwater detention.

SKM completed an Environmental Assessment Report in December 2006 for the B9 Project. As part of this study, SKM completed a Stormwater Detention Assessment to determine if there would be any impact on the peak flow in the Bunnerong Main Drain as a result of the redevelopment. Hydrological modelling results confirmed the development would have a negligible impact on the capacity of the Channel, hence a negligible effect on the flood impact downstream of the site. Therefore on-site detention would not be required.

It was also noted in the SKM Stormwater Detention Assessment that *"It is expected the results provided for the western part of the Amcor site can be applied to the eastern part of the site and that on-site detention would not be required"*.

Amcor currently harvests stormwater run-off from Long Dam for reuse in the process and will continue to do so for the new development. Long Dam is fed by a catchment of about 400 ha. The proposed stormwater scheme will collect and discharge run-off from 2.8 ha of the site to Long Dam.

#### 4.5 Catchment Areas

The proposed stormwater layout utilises all of the above discharge points including the saltwater outfall which discharges directly to Botany Bay via the Bunnerong Canal. The table below outlines the proposed catchment areas compared to the previous catchment areas for each discharge point. The area on the eastern side of the site to be subdivided and sold in the future has not been included in the Table as the drainage will be unchanged and will discharge to Bunnerong Creek.

Catchment	Previous Catchment Area (ha)	Proposed Catchment Area (ha)	Existing Pipe Size of Discharge Point
Long Dam	3.1	2.8	915 dia pipe
Council System (SW corner of site)	3.3	1.9	600 dia pipe
Process System	4.7	-	-
Bunnerong Creek via Council System (SE corner of site)	0.7	0.4	915 dia pipe
Existing Saltwater Outfall	-	6.7	1.2m x 2.4m box culvert (discharges into 1500dia pipe downstream)

Due to the utilisation of the saltwater outfall for stormwater discharge, the site catchment areas for Council systems have decreased thereby reducing the flows into these systems.



The proposed stormwater line north of the Finished Product Store has been sized to cater for runoff from the plot north of the proposed site boundary to be sold in the future.

#### **4.6 Hydraulic Model**

The proposed stormwater network has been modelled in DRAINS and pipes have been sized based on the concept design outlined in this document.

A DRAINS stormwater model was configured to simulate catchment hydrology and hydraulics of the proposed site layouts. Key parameters to be configured included pipe network layout, pipe sizing, grades and roughness, pit types and levels and overland flow path characteristics.

The proposed stormwater layout was simulated for the 20-year and the 100-year ARI design storm events with downstream water levels of the Bunnerong Canal set to 1.18m (highest astronomical tide) to size the stormwater network. Model results indicate that the design stormwater network is adequate to convey the 20-year design flow and the 100-year design flow with overland flow paths.

Model results can be provided on request.

#### **4.7 Impact on Receiving Systems**

The total impervious area for the proposed development is unchanged therefore there is no increase in pre-development flows.

The flood studies completed by SKM identified the volume of flood waters will not increase as a result of the redevelopment; rather the volume of flood waters will be redistributed between the four discharge points.

The stormwater layout was modelled in DRAINS for the worst case conditions at the saltwater outfall pipe. These conditions included:

- ▶ Highest Astronomical Tide: 1.18 m AHD (AMCOR Botany - Eastern Creek Flood Study)
- ▶ 100-year ARI storm event
- ▶ Outlet discharge 3.84 m<sup>3</sup>/s
- ▶ Outlet invert: -0.42 m AHD
- ▶ Outlet obvert: 1.104 m AHD

The analysis found no upwelling of the upstream network occurred. Model results indicate that the design stormwater network and existing downstream system is adequate to convey the 20-year design flow.

Hydrological modelling carried out by SKM as part of the 'Eastern Creek Flood Study' also concluded the existing culvert on the eastern side of the Amcor site and Bunnerong Canal is not sensitive to the tailwater. The bank levels of the outlet channel are typically between 2.0 and 3.0m AHD with extensive areas through the downstream port yards at around ground level of 2.0m AHD. In an extreme flood event this large downstream area will be inundated with flood waters rather than upwelling occurring within the stormwater network.



#### **4.8 Water Quality**

All stormwater flow collected off paved areas will be pre-treated, removing gross pollutants, sediments and oils before discharging off site. The proposed design includes three oil/silt arrestors located immediately upstream of each discharge point and one gross pollutant trap located at the waste paper yard to treat the higher concentration of large pollutants in this area.

### **5 Conclusion**

The proposed stormwater drainage system has been designed in accordance with the relevant Development Application Conditions of Consent.

The proposed design does not increase the impervious area of the site but does redistribute the catchment areas within the site. The total catchment areas discharging to Long Dam, the Council System and directly to Bunnerong Creek have been reduced. The largest site catchment discharges to Bunnerong Canal via the saltwater outfall. This outfall was originally used for the discharge of coolant water from the Mill Powerhouse and more recently to discharge diluted process water when the Sydney Water sewer was unavailable to Amcor. It is no longer required for this purpose.

Hydraulic modelling of the proposed network, the existing network downstream of the saltwater outfall and the tailwater height confirm there is adequate capacity within the system for the proposed design flows. Hydrological modelling completed by SKM confirms the flows are not sensitive to the downstream outlet conditions.

If you require any further information on the stormwater management system outlined in this document please do not hesitate to contact me.

Yours sincerely  
GHD Pty Ltd

A handwritten signature in black ink that reads 'Fiona Quigley'.

**Fiona Quigley**

Civil Engineer  
02 9239 7110

#### **Attachments:**

*Drawing 21-19632-C030 Stormwater Drainage Design – General Layout Plan*

#### **References:**

*Randwick City Council (October 1992), Private Stormwater Code*

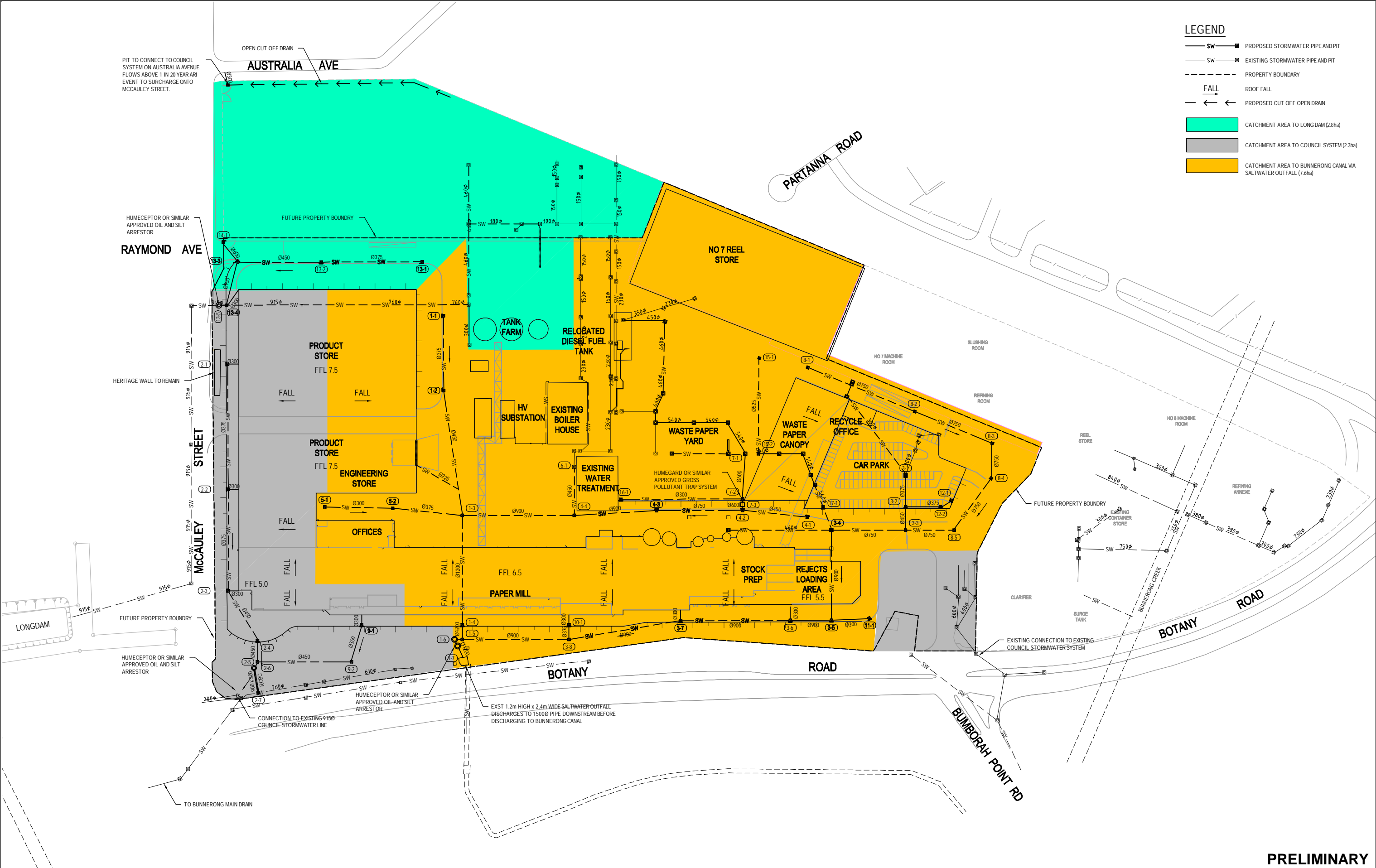
*Sinclair Knight and Merz (December 2006), New Botany Paper Mill Project B9 Environmental Assessment Report*

*Sinclair Knight and Merz (November 2005), Amcor Botany Paper Mill Stormwater Detention Assessment Impacts on Bunnerong Channel*

*Sinclair Knight and Merz (December 2008), Amcor Botany Western Side Flood Study*

*Sinclair Knight and Merz (December 2008), Amcor Botany Eastern Creek Flood Study*



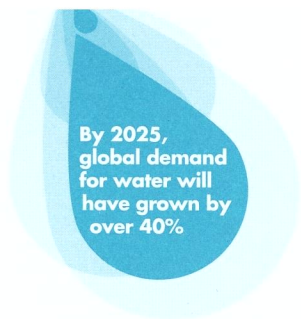


												 CLIENTS   PEOPLE   PERFORMANCE				DO NOT SCALE				Drawn RD		Designed FQ		Client		<b>BAULDERSTONE PTY LTD</b>									
																				Drafting Check		Design Check		Project		<b>AMCOR B9 PROJECT</b>									
																				Approved				Title		<b>STORMWATER DRAINAGE DESIGN</b>									
																				Date						Original Size		<b>GENERAL LAYOUT PLAN</b>							
<b>A ISSUED FOR COUNCIL REVIEW</b>				<b>RD</b>				<b>FQ*</b>				<b>AR*</b>				<b>19.08.10</b>										<b>A1</b>		<b>Drawing No: 21-19632-C030</b>				<b>Rev: A</b>			
No	Revision	Note: * indicates signatures on original issue of drawing or last revision of drawing				Drawn	Checked	Approved	Date									Scale 1:1000		This Drawing must not be used for Construction unless signed as Approved															



## **Appendix B Correspondence with Sydney Water**





Telephone: 8849 6118  
Fax: 8849 3111  
Officer: Jeya Jeyadevan  
Our Ref.: 2006/11578F

16 October 2012

Sinclair Knight Merz  
PO Box 164  
St Leonards 1590

Attention: Jonas Ball

Dear Sir/Madam,

**Stormwater Drainage Design  
Amcors B9 Project  
1891 Botany Road, Matraville**

---

With reference to the stormwater management scheme dated 19 August 2010 for the proposed new wastepaper mill at the above location.

Sydney Water has reviewed the stormwater drainage design which would discharge into the Sydney Water's Bunnerong Stormwater Channel and has no objection to the proposed stormwater arrangement.

As there are no new stormwater connections to the Sydney Water's stormwater system, no further Sydney Water's stormwater requirements would apply for this proposed stormwater drainage design.

If you have any queries please do not hesitate to contact me on the above number.

Yours sincerely

Jeya Jeyadevan  
Asset Planner, Stormwater



## **Appendix C Correspondence with SPC**

Ball, Jonas E (SKM)

---

From: Carolyn Moss <[cmoss@sydneyports.com.au](mailto:cmoss@sydneyports.com.au)>  
Sent: Thursday, 12 January 2012 11:54 AM  
To: Ball, Jonas E (SKM)  
Cc: Christa Sams  
Subject: RE: New Paper Mill - Stormwater discharge into Bunnerong Canal

Hi Jonas,

We advise that AMCOR may now start discharging into Bunnerong Canal. We are preparing a Licence to cover the terms of discharge which will send to you shortly.

Regards

**Carolyn Moss**

Manager, Commercial Property (Contractor)

**Sydney Ports Corporation**

Level 4, 20 Windmill Street | Walsh Bay NSW 2000 Australia  
PO Box 25, Millers Point | NSW 2000 Australia

E: [cmoss@sydneyports.com.au](mailto:cmoss@sydneyports.com.au)

T: +61 2 9296 4798 | F: +61 2 9296 4768 | M: 0427 664 576

[www.sydneyports.com.au](http://www.sydneyports.com.au)



---

From: Ball, Jonas E (SKM) [<mailto:JBall@globalskm.com>]  
Sent: Wednesday, 11 January 2012 9:10 AM  
To: Carolyn Moss  
Subject: RE: New Paper Mill - Stormwater discharge into Bunnerong Canal

Hi Carolyn

Evidence of AMCOR's PLI for \$20m

Jonas Ball  
Senior Environmental Scientist  
PO Box 164 St Leonards 1590  
Tel: 02 9928 2225  
Fax: 02 9928 2502  
Mobile: 0419 297 436  
Email: [jball@globalskm.com](mailto:jball@globalskm.com)

Sinclair Knight Merz

**achieve outstanding client success**

For further information, visit our website [www.skmconsulting.com](http://www.skmconsulting.com)

---

From: Carolyn Moss [mailto:cmoss@sydneyports.com.au]  
Sent: Tuesday, 10 January 2012 2:37 PM  
To: Ball, Jonas E (SKM)  
Subject: RE: New Paper Mill - Stormwater discharge into Bunnerong Canal

Hi Jonas,

We are happy to waive the requirement for the Contract Works Insurance so you just need to forward the Public Liability Insurance.

Thanks

**Carolyn Moss**

Manager, Commercial Property (Contractor)

**Sydney Ports Corporation**

Level 4, 20 Windmill Street | Walsh Bay NSW 2000 Australia  
PO Box 25, Millers Point | NSW 2000 Australia

E: [cmoss@sydneyports.com.au](mailto:cmoss@sydneyports.com.au)

T: +61 2 9296 4798 | F: +61 2 9296 4768 | M: 0427 664 576

[www.sydneyports.com.au](http://www.sydneyports.com.au)



---

From: Ball, Jonas E (SKM) [mailto:JBall@globalskm.com]  
Sent: Tuesday, 20 December 2011 3:38 PM  
To: Carolyn Moss  
Cc: Christa Sams; Gaye Dewick; Brian Batchelor; sean.rooney@debtech.com.au  
Subject: RE: New Paper Mill - Stormwater discharge into Bunnerong Canal

Hi Carolyn

I have received your letter and forwarded it to AMCOR.

No problems with the Public Liability Insurance – I will forward a copy either later this afternoon or tomorrow.

However AMCOR believes that it is unusual to issue insurance certificates (particularly contract works insurance) without some agreement in relation to liability for which the insurance is covering. Amcor would not want to agree to indemnify another party without agreement on what that indemnity is. It should be noted that AMCOR is not undertaking any works within Bunnerong Canal – rather it is utilising an existing asset.

Could you please clarify what is the expectation and need for the Contractor Insurance.

Thanks

Jonas Ball  
Senior Environmental Scientist  
PO Box 164 St Leonards 1590  
Tel: 02 9928 2225  
Fax: 02 9928 2502

Mobile: 0419 297 436  
Email: [jball@globalskm.com](mailto:jball@globalskm.com)

Sinclair Knight Merz  
**achieve outstanding client success**  
For further information, visit our website [www.skmconsulting.com](http://www.skmconsulting.com)

---

From: Carolyn Moss [mailto:[cmoss@sydneyports.com.au](mailto:cmoss@sydneyports.com.au)]  
Sent: Tuesday, 20 December 2011 12:02 PM  
To: Ball, Jonas E (SKM)  
Cc: Christa Sams; Gaye Dewick  
Subject: New Paper Mill - Stormwater discharge into Bunnerong Canal

Hi Jonas,

I refer to previous correspondence to Sydney Ports Corporation and attach a letter in relation to approval of stormwater discharge into Bunnerong Canal.

As advised in the attached letter Sydney Ports Corporation require copies of your Insurance policies before we can grant permission.

If you could please provide them either to myself by 3pm tomorrow or alternative to Gaye Dewick by close of business Thursday 22<sup>nd</sup>, we will be able to grant permission to discharge effective immediately. Otherwise we will not be able to grant permission until after the office resumes business on 9 January 2012.

Regards

**Carolyn Moss**  
Manager, Commercial Property (Contractor)

**Sydney Ports Corporation**  
Level 4, 20 Windmill Street | Walsh Bay NSW 2000 Australia  
PO Box 25, Millers Point | NSW 2000 Australia

E: [cmoss@sydneyports.com.au](mailto:cmoss@sydneyports.com.au)  
T: +61 2 9296 4798 | F: +61 2 9296 4768 | M: 0427 664 576  
[www.sydneyports.com.au](http://www.sydneyports.com.au)



---

This e-mail, and any attachments, are intended solely for the named addressee. It is confidential, may contain privileged information or material subject to copyright. If you are not the intended recipient, you must not copy or distribute it, take any action in reliance on it or disclose any details to any other person. If you have received this e-mail in error, please let the sender know by reply e-mail, delete it from your system and destroy any copies.

E-mails may be interfered with, contain computer viruses or other defects and may not be successfully replicated on other systems. We make no representations or warranties in relation to these matters. If you have any doubts about the authenticity of an e-mail purportedly sent by us,

Ball, Jonas E (SKM)

---

From: Carolyn Moss <cmoss@sydneyports.com.au>  
Sent: Monday, 17 September 2012 4:57 PM  
To: Ball, Jonas E (SKM)  
Subject: RE: Stormwater licence

Hi Jonas,

Our lawyers are looking at your requested amendments and I hope to have something to you in a day or two. In the meantime can you please answer the following;

1. I understand that the SKM report that you provided mentions that there will be treatment devices on our land. Can you please advise if this is the case or are they only on your land?
2. Can you please provide a map showing exactly where the discharge point is in the canal. The plan you sent previously is not clear on exactly where in the canal you will be discharging to – we need to see where on Sydney Ports land. Also do your pipes cross any other Sydney Ports land before it discharges into the canal?

I am happy for you to provide my contact details to the dept of Planning.

Regards

**Carolyn Moss**

Senior Property Manager - Commercial

**Sydney Ports Corporation**

Level 4, 20 Windmill Street | Walsh Bay NSW 2000 Australia  
PO Box 25, Millers Point | NSW 2000 Australia

E: [cmoss@sydneyports.com.au](mailto:cmoss@sydneyports.com.au)

T: +61 2 9296 4798 | F: +61 2 9296 4768 | M: 0427 664 576

[www.sydneyports.com.au](http://www.sydneyports.com.au)



---

From: Ball, Jonas E (SKM) [<mailto:JBall@globalskm.com>]  
Sent: Tuesday, 4 September 2012 15:13  
To: Carolyn Moss  
Cc: Brian Batchelor  
Subject: Stormwater licence

Hi Carolyn

Please our marked up version of the licence. We would be happy to discuss any of the proposed changes.

Before we can completed finalise the review we are still waiting on:

- 1) Details of the licence fee
- 2) The SPC conditions – this schedule is currently blank

We assume that you will provide the property details that define the Land.

Jonas Ball  
Senior Environmental Scientist  
PO Box 164 St Leonards 1590  
Tel: 02 9928 2225  
Fax: 02 9928 2502  
Mobile: 0419 297 436  
Email: [jball@globalskm.com](mailto:jball@globalskm.com)

Sinclair Knight Merz  
**achieve outstanding client success**  
For further information, visit our website [www.skmconsulting.com](http://www.skmconsulting.com)

SKM is committed to working with its clients to deliver a sustainable future for all. Please consider the environment before printing this e-mail. Notice - This message contains confidential information intended only for the exclusive use of the addressee named above. No confidentiality is waived or lost by any mistaken transmission to you. If you have received this message in error please delete the document and notify us immediately. Any opinion, text, documentation or attachment received is valid as at the date of issue only. The recipient is responsible for reviewing the status of the transferred information and should advise us immediately upon receipt of any discrepancy. All email sent to SKM will be intercepted, screened and filtered by SKM or its approved Service Providers.

---

This e-mail, and any attachments, are intended solely for the named addressee. It is confidential, may contain privileged information or material subject to copyright. If you are not the intended recipient, you must not copy or distribute it, take any action in reliance on it or disclose any details to any other person. If you have received this e-mail in error, please let the sender know by reply e-mail, delete it from your system and destroy any copies.

E-mails may be interfered with, contain computer viruses or other defects and may not be successfully replicated on other systems. We make no representations or warranties in relation to these matters. If you have any doubts about the authenticity of an e-mail purportedly sent by us, please contact us on 61 2 9296 4999.

[postmaster@sydneyports.com.au](mailto:postmaster@sydneyports.com.au)

Click [here](#) to report this email as spam.



## **Appendix D Correspondence with RCC**



Ball, Jonas E (SKM)

---

From: John Flanigan <John.Flanigan@randwick.nsw.gov.au>  
Sent: Tuesday, 10 July 2012 7:20 PM  
To: Nastasi, Sam  
Cc: Brian.Batchelor@amcor.com; Ball, Jonas E (SKM)  
Subject: RE: New Paper Mill - Stormwater discharge into Bunnerong Canal  
Attachments: AMCOR - Discharge of stormwater into Bunnerong Canal - April 2011.pdf

Hi Sam,

the email I was commenting on in my email of 28 May 2012 looked promising however no evidence of the licence has ever been produced.

On 6 June I received a copy of a letter from Sydney Ports to Jonas Ball , (copy attached). I have not been advised of any further developments regarding this matter.

The letter places further requirements on Amcor and/or SKM and/or GHD and reserves the right to deny stormwater from entering the canal. I am seeking definitive advice that Sydney Ports will accept Amcor' water.

regards

**John Flanigan**  
**Development Engineer Coordinator**  
**Randwick City Council**  
02 9399 0924  
0439 613 589  
[john.flanigan@randwick.nsw.gov.au](mailto:john.flanigan@randwick.nsw.gov.au)  
[www.randwick.nsw.gov.au](http://www.randwick.nsw.gov.au)



---

From: Nastasi, Sam [mailto:Sam.Nastasi@leicon.com.au]  
Sent: Tuesday, 10 July 2012 6:55 PM  
To: John Flanigan  
Cc: Mark.Evans@ghd.com  
Subject: FW: New Paper Mill - Stormwater discharge into Bunnerong Canal

fyi

---

Sam Nastasi  
Design Manager | Amcor B9 Botany Project

LEIGHTON CONTRACTORS PTY LIMITED ABN 98 000 893 667  
Gate 1, Cnr McCauley Street & Australia Avenue, Matraville, NSW 2036  
T +61 2 9414 3359 F +02-9414-3363 M 0419 041 401  
E [Sam.Nastasi@leicon.com.au](mailto:Sam.Nastasi@leicon.com.au)

---

P Please consider the environment before printing this e-mail  
From: Brian Batchelor [mailto:Brian.Batchelor@amcor.com]  
Sent: Tuesday, 10 July 2012 4:25 PM  
To: Nastasi, Sam  
Subject: FW: New Paper Mill - Stormwater discharge into Bunnerong Canal

Sam,  
Further to my previous e-mail, below is the exchange of e-mails between Jonas and John regarding Sydney Port's approval for Amcor to discharge to Bunnerong Canal.  
Brian.

---

From: Ball, Jonas E (SKM) [mailto:JBall@globalskm.com]  
Sent: Monday, 28 May 2012 16:25  
To: Brian Batchelor  
Subject: FW: New Paper Mill - Stormwater discharge into Bunnerong Canal

John seems to be happy with this!

From: John Flanigan [mailto:John.Flanigan@randwick.nsw.gov.au]  
Sent: Monday, 28 May 2012 4:20 PM  
To: Ball, Jonas E (SKM)  
Subject: RE: New Paper Mill - Stormwater discharge into Bunnerong Canal

Hi Jonas,

well done - I know this has been an ongoing issue for Amcor and SKM.

regards  
John Flanigan  
Development Engineer Coordinator  
Randwick City Council  
02 9399 0924  
0439 613 589  
[john.flanigan@randwick.nsw.gov.au](mailto:john.flanigan@randwick.nsw.gov.au)  
[www.randwick.nsw.gov.au](http://www.randwick.nsw.gov.au)



From: Ball, Jonas E (SKM) [mailto:JBall@globalskm.com]  
Sent: Monday, 28 May 2012 4:08 PM  
To: John Flanigan  
Cc: Brian Batchelor  
Subject: New Paper Mill - Stormwater discharge into Bunnerong Canal

Hi John

Approval from Sydney Ports to discharge stormwater into Bunnerong Canal.

We have been chasing Sydney Ports since this email to get the licence – but with no result.

If you need more information give me a call.

Jonas Ball  
Senior Environmental Scientist  
PO Box 164 St Leonards 1590  
Tel: 02 9928 2225  
Fax: 02 9928 2502  
Mobile: 0419 297 436  
Email: [jball@globalskm.com](mailto:jball@globalskm.com)

Sinclair Knight Merz  
achieve outstanding client success  
For further information, visit our website [www.skmconsulting.com](http://www.skmconsulting.com)

From: Carolyn Moss [<mailto:cmoss@sydneyports.com.au>]  
Sent: Thursday, 12 January 2012 11:54 AM  
To: Ball, Jonas E (SKM)  
Cc: Christa Sams  
Subject: RE: New Paper Mill - Stormwater discharge into Bunnerong Canal

Hi Jonas,

We advise that AMCOR may now start discharging into Bunnerong Canal. We are preparing a Licence to cover the terms of discharge which will send to you shortly.

Regards

Carolyn Moss  
Manager, Commercial Property (Contractor)

Sydney Ports Corporation  
Level 4, 20 Windmill Street | Walsh Bay NSW 2000 Australia  
PO Box 25, Millers Point | NSW 2000 Australia

E: [cmoss@sydneyports.com.au](mailto:cmoss@sydneyports.com.au)  
T: +61 2 9296 4798 | F: +61 2 9296 4768 | M: 0427 664 576  
[www.sydneyports.com.au](http://www.sydneyports.com.au)



From: Ball, Jonas E (SKM) [<mailto:JBall@globalskm.com>]  
Sent: Wednesday, 11 January 2012 9:10 AM

To: Carolyn Moss  
Subject: RE: New Paper Mill - Stormwater discharge into Bunnerong Canal

Hi Carolyn

Evidence of AMCOR's PLI for \$20m

Jonas Ball  
Senior Environmental Scientist  
PO Box 164 St Leonards 1590  
Tel: 02 9928 2225  
Fax: 02 9928 2502  
Mobile: 0419 297 436  
Email: [jball@globalskm.com](mailto:jball@globalskm.com)

Sinclair Knight Merz  
achieve outstanding client success  
For further information, visit our website [www.skmconsulting.com](http://www.skmconsulting.com)

From: Carolyn Moss [<mailto:cmoss@sydneyports.com.au>]  
Sent: Tuesday, 10 January 2012 2:37 PM  
To: Ball, Jonas E (SKM)  
Subject: RE: New Paper Mill - Stormwater discharge into Bunnerong Canal

Hi Jonas,

We are happy to waive the requirement for the Contract Works Insurance so you just need to forward the Public Liability Insurance.

Thanks

Carolyn Moss  
Manager, Commercial Property (Contractor)

Sydney Ports Corporation  
Level 4, 20 Windmill Street | Walsh Bay NSW 2000 Australia  
PO Box 25, Millers Point | NSW 2000 Australia

E: [cmoss@sydneyports.com.au](mailto:cmoss@sydneyports.com.au)  
T: +61 2 9296 4798 | F: +61 2 9296 4768 | M: 0427 664 576  
[www.sydneyports.com.au](http://www.sydneyports.com.au)



From: Ball, Jonas E (SKM) [<mailto:JBall@globalskm.com>]  
Sent: Tuesday, 20 December 2011 3:38 PM  
To: Carolyn Moss

Cc: Christa Sams; Gaye Dewick; Brian Batchelor; [sean.rooney@debtech.com.au](mailto:sean.rooney@debtech.com.au)  
Subject: RE: New Paper Mill - Stormwater discharge into Bunnerong Canal

Hi Carolyn

I have received your letter and forwarded it to AMCOR.

No problems with the Public Liability Insurance – I will forward a copy either later this afternoon or tomorrow.

However AMCOR believes that it is unusual to issue insurance certificates (particularly contract works insurance) without some agreement in relation to liability for which the insurance is covering. Amcor would not want to agree to indemnify another party without agreement on what that indemnity is. It should be noted that AMCOR is not undertaking any works within Bunnerong Canal – rather it is utilising an existing asset.

Could you please clarify what is the expectation and need for the Contractor Insurance.

Thanks

Jonas Ball  
Senior Environmental Scientist  
PO Box 164 St Leonards 1590  
Tel: 02 9928 2225  
Fax: 02 9928 2502  
Mobile: 0419 297 436  
Email: [jball@globalskm.com](mailto:jball@globalskm.com)

Sinclair Knight Merz  
achieve outstanding client success  
For further information, visit our website [www.skmconsulting.com](http://www.skmconsulting.com)

From: Carolyn Moss [<mailto:cmoss@sydneyports.com.au>]  
Sent: Tuesday, 20 December 2011 12:02 PM  
To: Ball, Jonas E (SKM)  
Cc: Christa Sams; Gaye Dewick  
Subject: New Paper Mill - Stormwater discharge into Bunnerong Canal

Hi Jonas,

I refer to previous correspondence to Sydney Ports Corporation and attach a letter in relation to approval of stormwater discharge into Bunnerong Canal.

As advised in the attached letter Sydney Ports Corporation require copies of your Insurance policies before we can grant permission.

If you could please provide them either to myself by 3pm tomorrow or alternative to Gaye Dewick by close of business Thursday 22<sup>nd</sup>, we will be able to grant permission to discharge effective immediately. Otherwise we will not be able to grant permission until after the office resumes business on 9 January 2012.

Regards

Carolyn Moss  
Manager, Commercial Property (Contractor)

Sydney Ports Corporation  
Level 4, 20 Windmill Street | Walsh Bay NSW 2000 Australia  
PO Box 25, Millers Point | NSW 2000 Australia

E: [cmoss@sydneyports.com.au](mailto:cmoss@sydneyports.com.au)  
T: +61 2 9296 4798 | F: +61 2 9296 4768 | M: 0427 664 576  
[www.sydneyports.com.au](http://www.sydneyports.com.au)



---

This e-mail, and any attachments, are intended solely for the named addressee. It is confidential, may contain privileged information or material subject to copyright. If you are not the intended recipient, you must not copy or distribute it, take any action in reliance on it or disclose any details to any other person. If you have received this e-mail in error, please let the sender know by reply e-mail, delete it from your system and destroy any copies.

E-mails may be interfered with, contain computer viruses or other defects and may not be successfully replicated on other systems. We make no representations or warranties in relation to these matters. If you have any doubts about the authenticity of an e-mail purportedly sent by us, please contact us on 61 2 9296 4999.

[postmaster@sydneyports.com.au](mailto:postmaster@sydneyports.com.au)

Click [here](#) to report this email as spam.

SKM is committed to working with its clients to deliver a sustainable future for all. Please consider the environment before printing this e-mail. Notice - This message contains confidential information intended only for the exclusive use of the addressee named above. No confidentiality is waived or lost by any mistaken transmission to you. If you have received this message in error please delete the document and notify us immediately. Any opinion, text, documentation or attachment received is valid as at the date of issue only. The recipient is responsible for reviewing the status of the transferred information and should advise us immediately upon receipt of any discrepancy. All email sent to SKM will be intercepted, screened and filtered by SKM or its approved Service Providers.

---

This e-mail, and any attachments, are intended solely for the named addressee. It is confidential, may contain privileged information or material subject to copyright. If you are not the intended recipient, you must not copy or distribute it, take any action in reliance on it or disclose any details to any other person. If you have received this e-mail