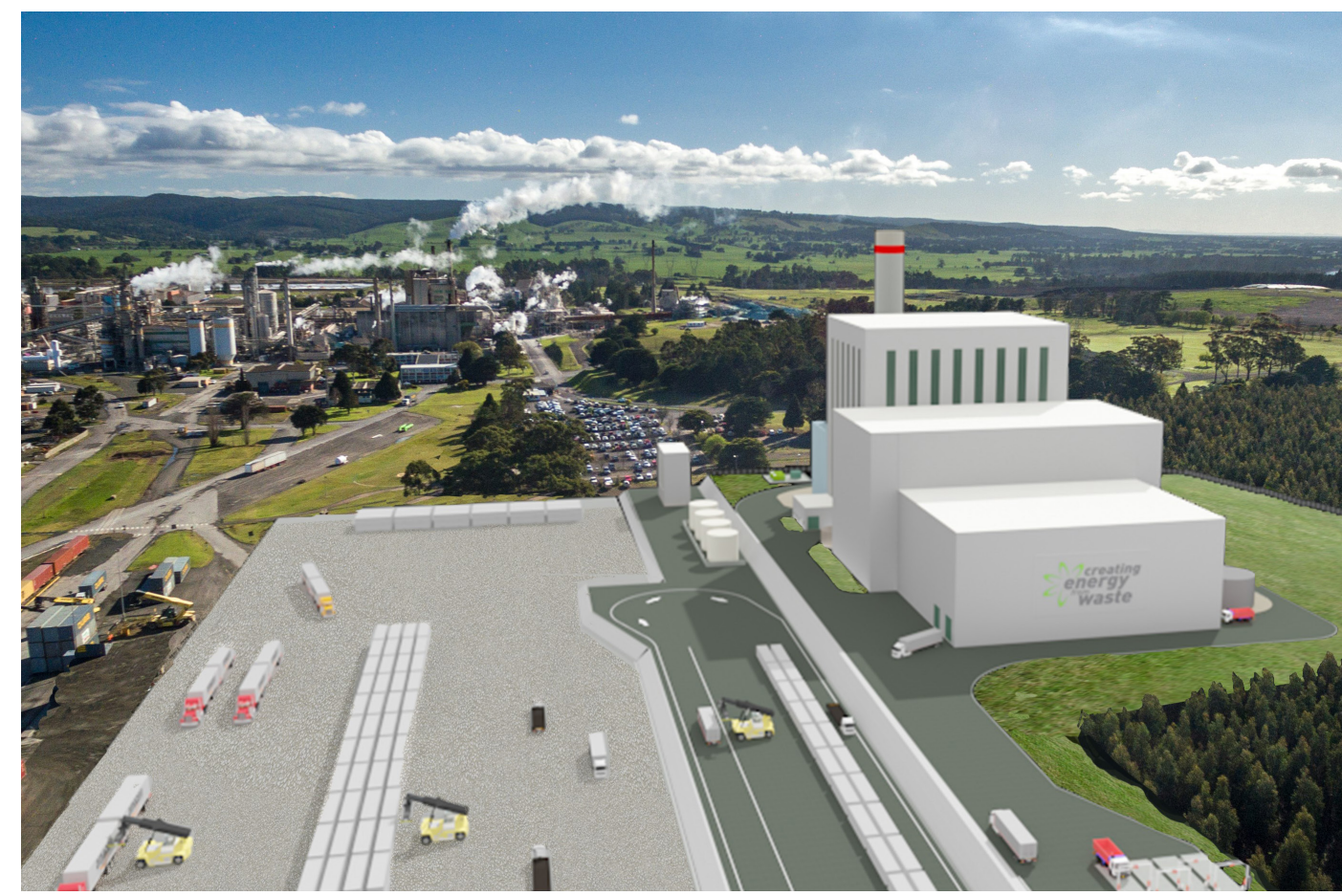


State-of-the-art Maryvale Energy from Waste facility

EfW Key Metrics Stage 1



Opal Australian Paper, Veolia and Masdar Tribe Australia are fast-tracking job creation through the state-of-the-art Maryvale Energy from Waste facility.

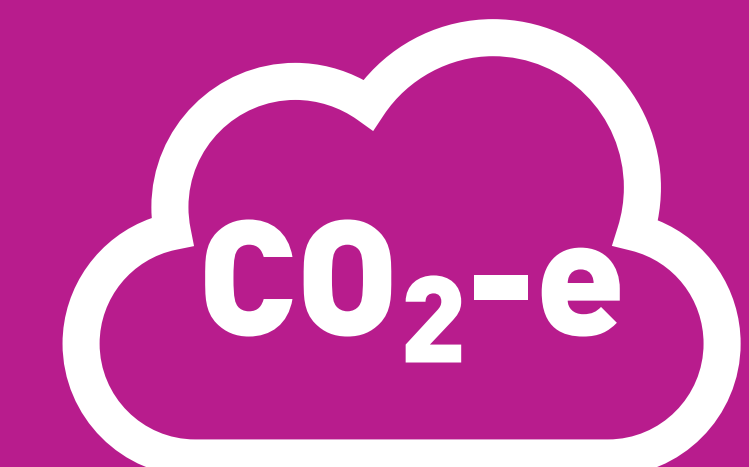
Right-sized for current customer demand, the facility will integrate best available energy from waste technology with the Maryvale Paper Mill, providing high-efficiency steam and electricity to support a major Australian regional manufacturer.



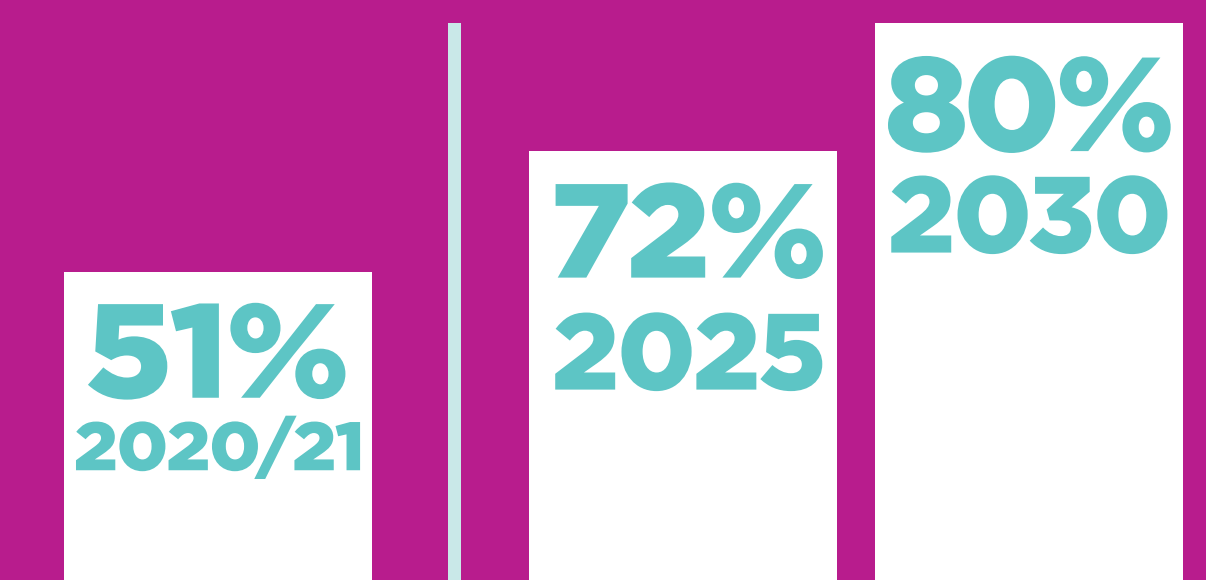
Context
snapshot



5.71M tonnes of waste sent to landfill in 2020/21



2M tonnes of annual greenhouse gas emissions



Landfill diversion target of 72% by 2025 and 80% by 2030 vs. current performance 2020/21 of 51%



Environment

Residual Waste (tpa)

325,000 (99% landfill diversion)

GHG (tCO₂-e)

-270,000 = removing 50,000 cars / year from road

Recovered Metals (tpa)

6,000 tpa

Recycled Aggregates (tpa)

65,000 tpa

Energy

120 MWth (35MWe)



Economy

Jobs - Construction (FTEs)
* Average per year

Latrobe Valley: 227
Victoria: 523

Jobs - Operations (FTEs)

Latrobe Valley: 132 (inc flow-ons)
Victoria: 455 (inc flow-ons)

“Value-add” to economy - Construction

Latrobe Valley: \$102M
Victoria: \$241M

“Value-add” to economy - Operations (per year)

Latrobe Valley: \$48M
Victoria: \$100M



Social

Community

Encouraging a positive social outlook for Gippsland’s economy

Circular Economy Principles

Playing an essential role in solving Victoria’s waste management challenges

Local manufacturing

Supporting a major regional employer’s sustainability