

# Opal Cartons

## Australia & New Zealand

July 2025

Thinking packaging.  
Discover Opal.

**Opal.**

# Opal: The One Stop Shop

As a fully vertically integrated business, Opal works in partnership with our customers to deliver a wide range of products & solutions

## Packaging



Corrugated boxes



Solid board folding cartons



Bags and sacks



Point of Sale displays



Packaging consumables



Sustainable packaging solutions

## Paper and Board



Packaging papers



Papers and board for Cold-Chain



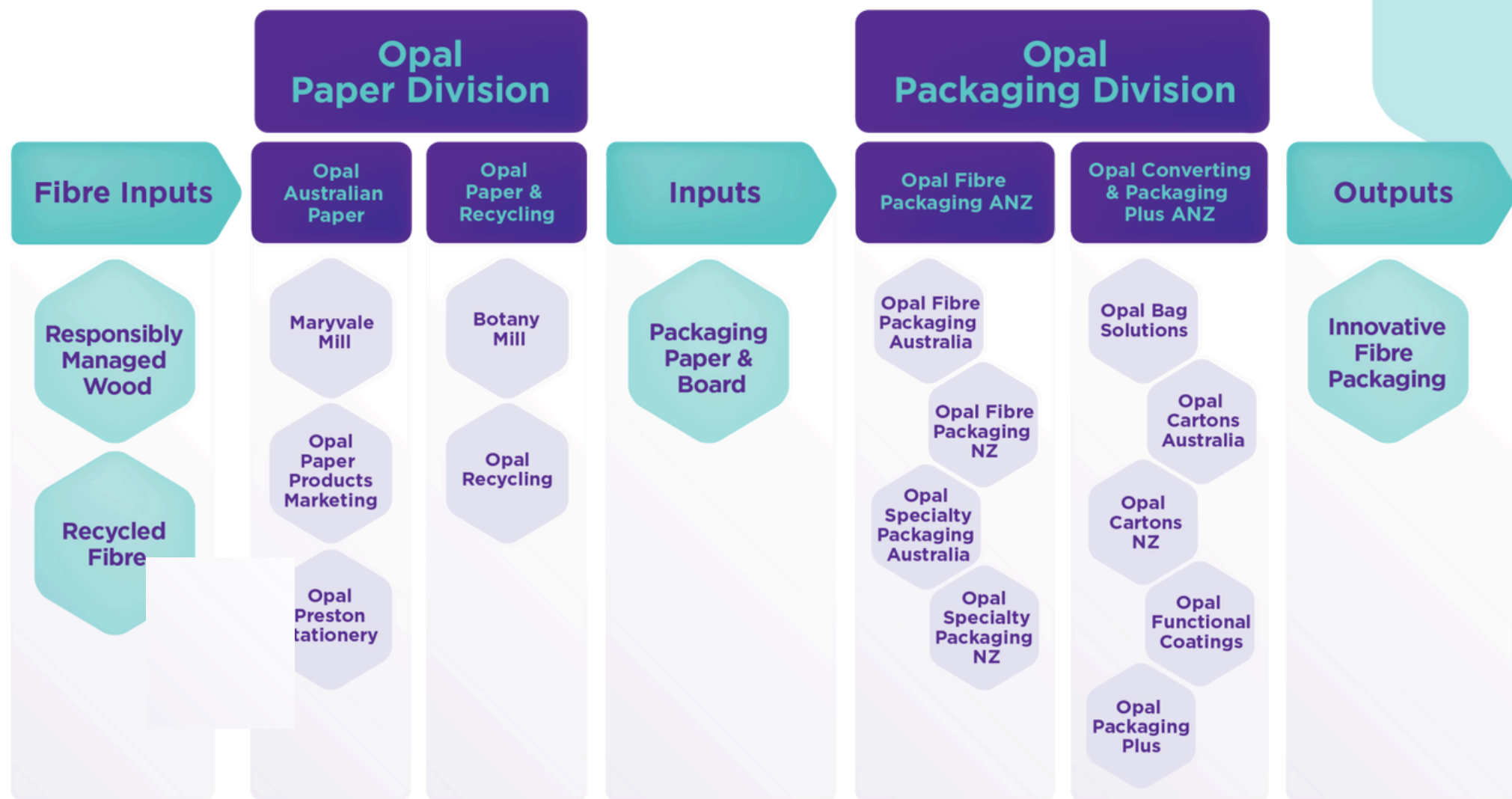
Recycled containerboard



Innovative coatings for demanding applications

# The Opal Value Chain

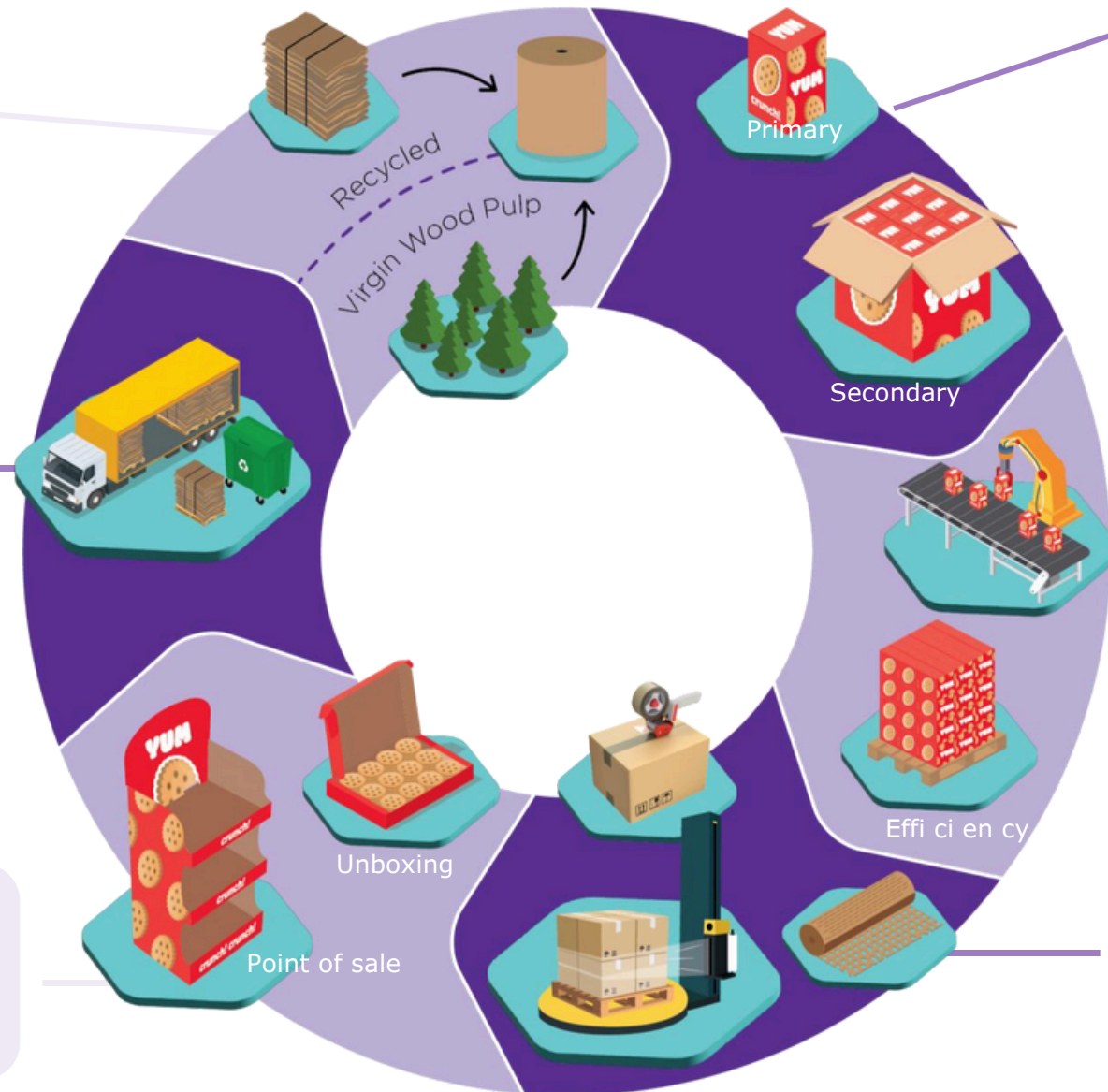
The Opal Group offers a fully integrated paper and fibre-based packaging value chain.



# One Opal: Customer Focused Value Chain

## Paper

- B9 Mill is in the top quartile globally for energy and water efficiency and quality



### Packaging

- 6 pack primary
- 24 pack secondary

### Automation & Efficiency

- Case erector
- Packer
- iSpek – packaging & pallet configuration
- Opal Creative

### Consumables

- Tape, void-fill
- Pallet wrap
- Machinery

### Recycling

Collection from

- Woolworths
- Aldi
- Metcash / IGA

### Retail & Consumer

- Retail POS
- Premium unboxing



# Opal Cartons

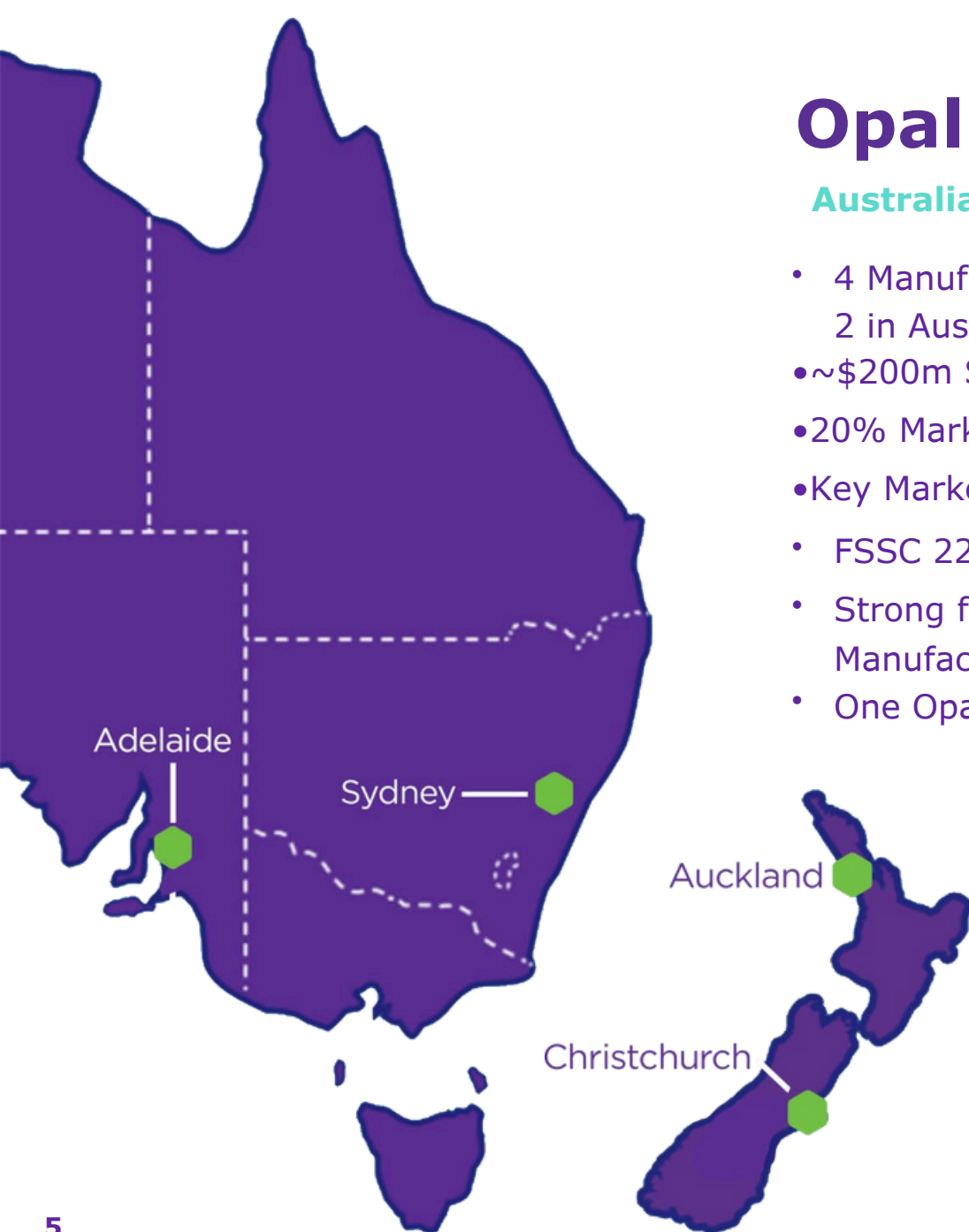
## Our Business



# Opal Cartons ANZ - Sites

## Australia & New Zealand Value Proposition

- 4 Manufacturing Sites:
  - 2 in Australia and 2 in NZ, for contingency of supply
- ~\$200m Sales and ~400 Team members, wealth of experience
- 20% Market Share in Australia and 50% Market Share in NZ
- Key Markets segments: FMCG, QSR, Dairy, Seafood, Beverage, Protein
- FSSC 22000 Direct Food packaging certified & FSC CoC certified
- Strong focus on safety, quality and DIFOT supported with our Manufacturing Excellence program
- One Opal strategic selling, we are better together.



**Opal.**

# Opal Cartons Australia

## Two Sites in Australia = Security of Supply

**Sydney:** Currently in the process of investing in a new greenfield site 2025-2026

- Flexo printing press & Offset printing presses
- Asitrade Litho Laminator
- Bobst Die cutters
- Glue lines with robotics
- Clamming Machines & Window facing equipment

**Adelaide:** Quality focused site suited for smaller volumes & litho laminate

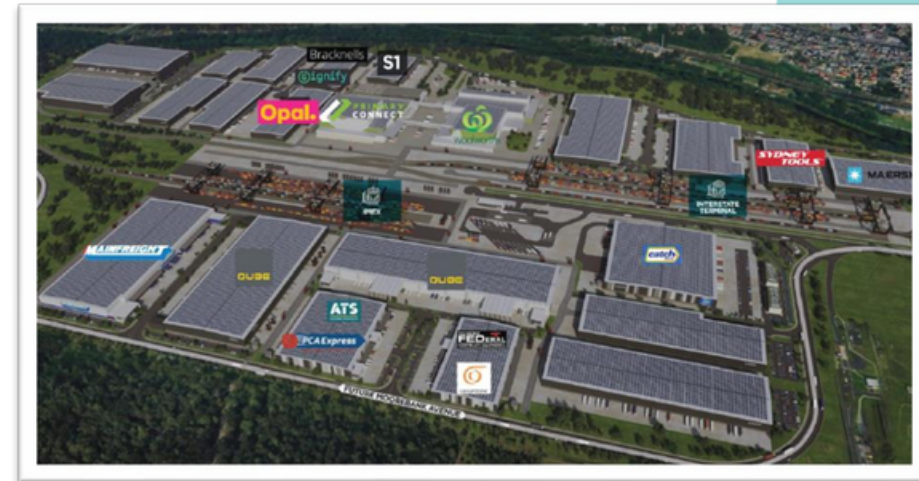
- 2 Offset printing press, **1 Mitsubishi 6 colour & 1 KBA 7 colour**
- 1 Asitrade Litho Laminator
- 4 Bobst Die cutters
- 1 Window facing machine
- 3 Glue lines with robotics
- 1 Clamming machine

## What makes us great supplier?

- Our People and wealth of history and knowledge
- Market leader in supplying packaging to the QSR & FMCG sectors
- New investment in a purpose-built folding-cartons manufacturing facility
- Strategic location accessible to major highways, interstate rail network & airports

## Accreditation

- FSSC22000 Food Safety approved sites





# Opal Cartons New Zealand

## Two sites in New Zealand = Security of supply

**Auckland:** purpose-built site opened April 2016 in Manukau

- 3 Offset Printing Presses, 2x Roland Sheet fed and 1 K&B Sheet fed press
- 6 Bobst Die cutters
- 5 Glue lines and robotic palletisation
- Extended warehousing space for holding stock

**Christchurch:** Quality focused site suited for South Island production

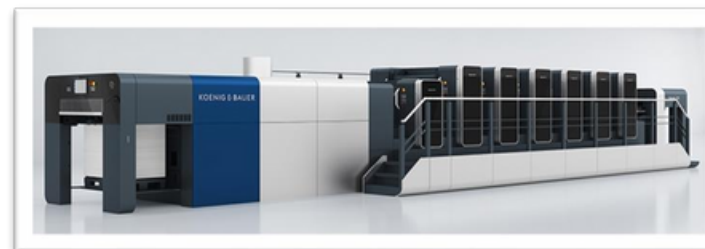
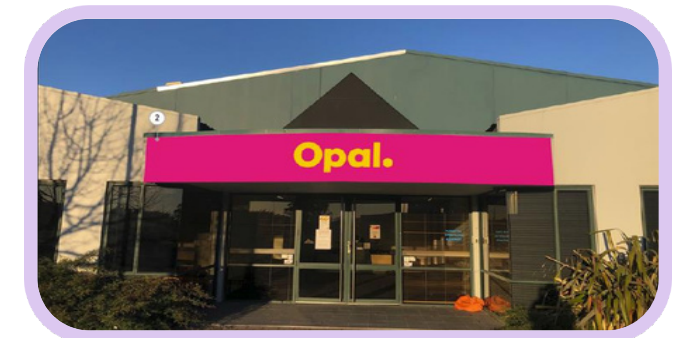
- 1 offset K&B Rapida 105 Printing press, newly commissioned March 2025
- 3 Bobst die cutters
- 4 Glue lines and window lamination

## What makes us great supplier?

- Experienced people across all disciplines, with focus on Apprentice training
- Market leader with consistent delivery performance, quality and professional
- Account Management
- Innovative and Customer focused business
- Ability to supply Nationally, and load balance during the peak seasons
- Quality Focus – winning Gold medals in the NZ Pride in Print Awards

## Accreditation

- FSSC22000 Food Safety approved sites



**Opal.**



# The Carton Manufacturing Process

Fromreeltoretail,wemanagetheentirepackagingjourneywith precision and efficiency.



Reel

Raw board materials arrive in reel format, ready for conversion.



Sheet

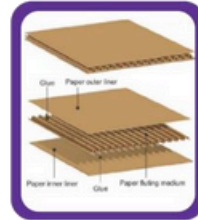
Reels are sheeted to the required sizes for processing.



Print

- Flexo
- Litho

Custom graphics are applied using **flexographic** or **lithographic** printing.



Laminate

Printed sheets are laminated to corrugate or solid board for durability and strength.



Cut

Sheets are die-cut to shape, forming the structure of the carton.



Glue

- Straight
- Crash-lock
- Clam

Various gluing styles are applied, including **straight-line**, **crash-lock**, and **clam-shell** formats.



Pack

Cartons are packed, either flat or formed, ready for shipment.



Palletise → Warehouse

Finished goods are palletised and sent to the warehouse, ready for distribution.

# The Carton Manufacturing Process

Fromreeltoretail,wemanagetheentirepackagingjourneywith precision and efficiency.





# Opal Cartons

## Our People





# Our People and Awards

Jenny 50 years service



Georgina 50 years service



Apprentices of the year



Craig Sales Excellence Award



2025 Gold Award Winner



Opal.